

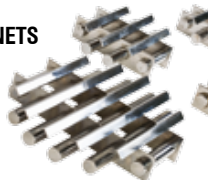
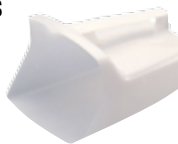





MOULDPRO

04.

MATERIAL HANDLING

93 04.1 LOADER HOSES 	96 04.2 VACUUM COUPLERS 	98 04.3 HOPPER MAGNETS 
98 04.4 MATERIAL SCOOPS 	99 04.5 BALANCES AND MOISTURE ANALYSER 	

ANTI-STATIC PU HOSE/PVC HELIX



Part No.	Ø ID (mm)	Min Wall thickness (mm)	Roll Length (m)	Wire Clip Ref
PUP38	38	0,8	10	3030250
PUP40	40	1	10	3030250
PUP45	45	1	10	3030269
PUP50	50	1	10	3030285
PUP60	60	1	10	3030306

Description:

Anti-Static Polyurethane hose reinforced with rigid PVC spiral helix and copper wire
 Inside surface perfectly smooth, outside corrugated
 Excellent flexibility
 Light abrasion resistance
 Operating temperature -20°C to +80°C
 30m Coil

PU HOSE/STEEL HELIX



Part No.	Ø ID (mm)	Min Wall thickness (mm)	Roll Length (m)	Wire Clip Ref
PURH32	32	1,5	10	3030242
PURH38	38	1,5	10	3030250
PURH40	40	1,5	10	3030250
PURH45	45	1,5	10	3030269
PURH50	50	1,5	10	3030285
PURH60	60	1,5	10	3030306

Description:

Polyurethane hose reinforced with a copper covered steel helix
 Very high resistance to abrasions
 Excellent flexibility
 Smooth Bore
 Operating temperature -40°C to +80°C
 10m Coil

PVC HOSE



Part No.	Ø ID (mm)	Ø OD (mm)	Roll Length	Clamp Ref.
PAPVC19	20	27	30	HDC2325
PAPVC25	25	33	30	HDC3134
PAPVC31	32	40,4	30	HDC3740
PAPVC38	38	47	30	HDC4347
PAPVC50	50	60	30	HDC5963
PAPVC64	64	74,8	30	HDC7379
PAPVC75	76	88,2	30	HDC8591

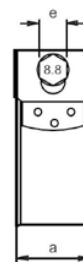
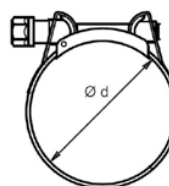
Description:

"Clear PVC Hose with a steel spiral helix
 Excellent flexibility
 Inside & Outside smooth
 Operation temperature -10°C to + 60°C
 30 m Coil"

HEAVY DUTY CLAMPS/SILICON DRYER HOSE

HOSE CLAMPS HEAVY DUTY

**STAINLESS
STEEL**



Part No.	Ø	e	a		Hose ref.
HDC2325	23-25	8	18	50	PAPVC19
HDC3134	31-34	11	20	50	PAPVC25
HDC3740	37-40	11	20	50	PAPVC31
HDC4347	43-47	11	20	50	PAPVC38
HDC5963	59-63	11	20	25	PAPVC50
HDC7379	73-79	13	25	25	PAPVC64
HDC8591	85-91	13	25	25	PAPVC75

Description:

Material: Stainless Steel

SILICON DRYER HOSE



Part No.	Ø ID (mm)	Roll Length (m)	Wire Clip Ref
SIL132	32	4	3030200
SIL138	38	4	3030226
SIL141	41	4	3030234
SIL151	51	4	3030269
SIL160	60	4	3030285
SIL170	70	4	3030306

Description:

Coated glass fabric - Single Ply
Operating Temperature -60°C to +250°C
4 Metre Length

WIRE CLIP WITH SCREW - IDEAL FOR LOADER HOSES WITH OUTER HELIX



Part No.	Size range mm.
3030200	33-37
3030218	35,5-40
3030226	38,5-43
3030234	41-46
3030242	43,5-49
3030250	46,5-53
3030269	50,5-56
3030277	53,5-60
3030285	56,5-64
3030293	60-68
3030306	64-72

Description:

Wire:	Steel wire B-UNI 3823	This clip was specially designed for use with hoses incorporating an outer helix. It is generally used when installing ventilation ducting.
Screw:	6.6 grade steel Cr3 zinc-plated	The double-wire construction of this clip means that it sits comfortably on either side of the helix and can then be clamped down firmly thanks to the screw-tightening system.

VACUUM COUPLINGS

SUCTION COUPLINGS FOR MATERIAL CONVEYING OF STAINLESS STEEL 1.4305



Description:

High quality quick coupling system for conveying of polymer granulates or liquids.

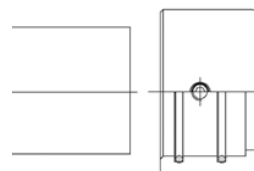
- Stainless Steel (wear resistance)
- Full flow passage
- Connections for pipes, tubes and hoses
- Quick and easy operation

COUPLING FOR HOSE ATTACHMENT



Part No.	Hose Attachment (mm)	Flow Ø	Diameter	Length
VCH38	38	34	65	82
VCH40	40	36	65	82
VCH45	45	41	65	82
VCH50	50	41	65	82

COUPLING FOR PIPE ATTACHMENT



Part No.	Pipe Diameter (mm)	Flow Ø	Diameter	Length
VCP38	38	34	65	68
VCP40	40	36	65	68
VCP45	45	41	65	68
VCP50	50	41	65	68

COUPLING WITH FEMALE THREAD



Part No.	Thread	Flow Ø	Diameter	Length
VCT1-1/2	1-1/2"	41	65	68
VCT2	2"	41	65	68

BLIND COUPLING WITH CHAIN

STAINLESS
STEEL



Part No.	Flow Ø	Diameter	Length
VCB	VCB	65	82

PLUG FOR HOSE ATTACHMENT

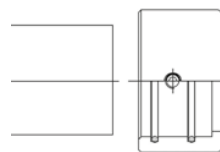
STAINLESS
STEEL



Part No.	Hose Attachment (mm)	Flow Ø	Diameter	Length
VPH38	38	34	55	83
VPH40	40	36	55	83
VPH45	45	41	55	83
VPH50	50	41	55	83

PLUG FOR PIPE ATTACHMENT

STAINLESS
STEEL



Part No.	Pipe Diameter (mm)	Flow Ø	Diameter	Length
VPP38	38	34	58	68,5
VPP40	40	36	58	68,5
VPP45	45	41	58	68,5
VPP50	50	41	58	68,5

PLUG WITH FEMALE THREAD

STAINLESS
STEEL



Part No.	Thread	Flow Ø	Diameter	Length
VPT1-1/2	1-1/2"	41	59	65
VPT2	2"	41	59	65

BLIND PLUG WITH CHAIN

STAINLESS
STEEL



Part No.	Flow Ø	Diameter	Length
VPB	-	58	60

HOPPER MAGNET / SCOOP

HOPPER MAGNETS

STAINLESS
STEEL

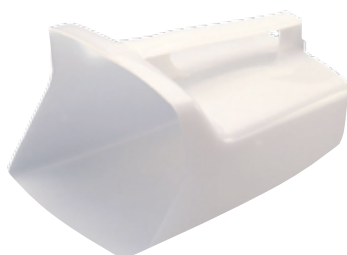


Part No.	Size Diameter
D100	100mm.
D150	150mm.
D200	200mm.
D250	250mm.
D300	300mm.

Description:

- Separation Magnets
- Stainless Steel encased
- Place direct in the Hopper to separate metal from polymers and avoid damage of nozzle and hotrunners etc.

MATERIAL SCOOP



Part No.	Size
2885	1.9ltr

Description:

1.9Ltr Material Scoop
Ideal for scooping granules and tipping into material hoppers

COMPACT BALANCE



Part No.	Capacity	Readability	Platform Size
MCB500	500 g.	0,1 g.	Ø 120 mm.
MCB2000	2000 g.	0,1 g.	Ø 120 mm.

Description:

Compact balance for weighing parts up to 2000 g.

Features:

Backlit LCD display
Stainless steel pan
ShockProtect™ overload three-point protection
Can be stacked for storage
Lock down mounting slot for Kensington™ type lock and cable
Dual tare keys
Lightweight and portable
Colour coded, sealed keypad

Modern low profile design
Low cost and simple to use
External calibration
Auto sleep / power down function to save battery life
Auto power off
Low battery indication
AC Adapter

Applications:

Weighing
Percentage weighing
Parts counting
Below balance weighing
Weight accumulation

PRECISION BALANCE



Part No.	Capacity	Readability	Platform Size
MPB410	410 g.	0,001 g.	Ø 120 mm.

Description:

Precision Balance for weighing parts with very accurate tolerance.

Features:

Backlit LCD display
Colour coded keys
Level indicator with adjustable levelling feet
Removable draft shield supplied
Robust metal housing
Sealed keypad
External calibration
Pan lifter to easily remove samples

Applications:

Weighing
Net / Total
Check weighing
Percentage weighing
Weight accumulation
Parts counting
Animal / dynamic weighing
Density determination
Below balance weighing

SCALES AND MOISTURE ANALYZER

MOISTURE ANALYSER



Part No.	Capacity	Readability	Platform Size
MMB65	65 g.	0,001 g.	Ø 100 mm.

Description:

The MMB Moisture Analyser makes moisture analysis of plastic granules easy for fast and accurate results.

The moisture analyzer comprises of a balance and an integrated heater. The analyser will first weigh the material sample in a foil tray at the start of the process; it will then heat the sample up, removing the moisture, and continue heating sample until it stops losing weight. This data is then used to calculate the moisture content based on the moisture loss rate, known as a drying curve.

Features:

- USB port for memory card and USB I/O interface
- RS-232 interface
- Built-in memories for storing products and settings
- 3 settings for heating sample, ramp up, step and standard
- Automatic test start setting for when the lid is closed
- Pan lifter to easily remove samples
- Large backlit display with dual text prompts

CALIBRATION WEIGHTS



Part No.	Weight
CALW20G	20 gram
CALW50G	50 gram
CALW200G	200 gram
CALW1000G	1000 gram

Description:

Ideal for calibrating Scales and moisture analyzer.